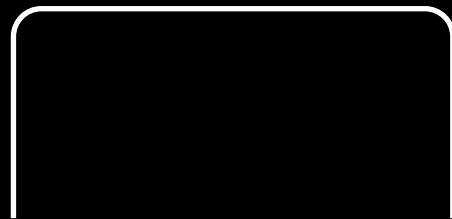




# Noble Metal

Forging Trust Through  
Quality and Integrity

# ABOUT US



At Noble Metal, we specialize in fully customized fabrication solutions tailored to your exact project requirements. Whether it's specific profiles, unique dimensions, specialty bends, or private-label components - our team is equipped to deliver precision-crafted metal products that meet your needs. We work directly with clients, architects, and contractors to bring your vision to life. To get started with a custom order or to speak with a specialist, simply email us and we'll take care of the rest.

[sales@noblemetal.ca](mailto:sales@noblemetal.ca)



# PRODUCTS

## HEAVY GAUGE STUD



### Description:

Engineered for high-strength, load-bearing applications like tall walls, curtain walls, and high-impact areas. Made from high-tensile galvanized steel, ensuring code compliance and durability.

### Technical Specifications

**Web Sizes:** 2-1/2" 3-5/8" 6" 8" 10" 12"

**Flange Sizes:** 1-1/4" 1-1/2" 2"

**Material Thickness:** (16 gauge) (14 gauge) (12 gauge)  
(10 gauge)

**Lengths:** 8' to 24'

## HEAVY GAUGE TRACK



### Description:

Robust tracks for structural steel stud systems, used as top and bottom channels. Provides strength and precise alignment for high-load applications, made from high-tensile galvanized steel.

### Technical Specifications

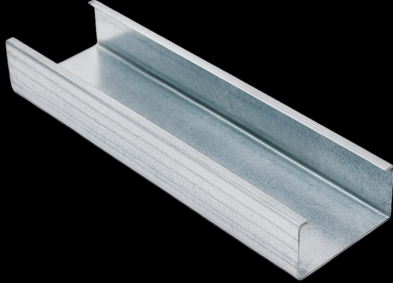
**Web Sizes:** 2-1/2" 3-5/8" 6" 8" 10" 12"

**Leg Heights:** 1" 1-1/4" 1-1/2"

**Material Thickness:** (16 gauge) (14 gauge) (12 gauge)  
(10 gauge)

**Lengths:** 8' to 24'

# LIGHT GAUGE STUDS



## Description:

Designed for non-load-bearing partition walls, offering strength and versatility for interior framing, bulkheads, and soffits. Made from premium galvanized steel.

## Technical Specifications

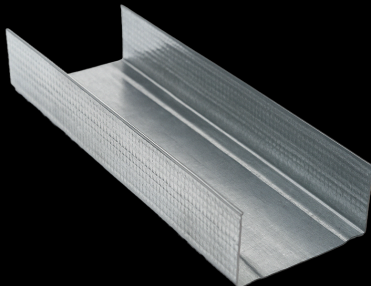
**Web Sizes:** 1-5/8" 2-1/2" 3-5/8" 6", 8"

**Flange Sizes:** 1-1/4" 1-1/2" 2"

**Material Thickness:** (25 gauge) (22 gauge) (20 gauge)  
(18 gauge)

**Lengths:** 8' to 24'

# LIGHT GAUGE TRACK



## Description:

Complements light gauge studs as top and bottom channels for non-load-bearing walls. Ensures quick installation and clean alignment for partitions and drywall framing.

## Technical Specifications

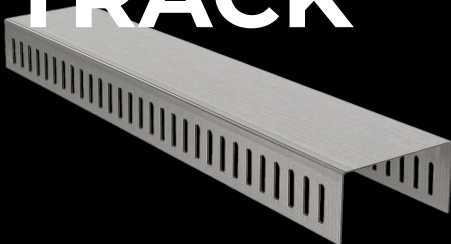
**Web Sizes:** 1-5/8" 2-1/2" 3-5/8" 6" 8"

**Leg Heights:** 1" 1-1/4" 1-1/2" 2"

**Material Thickness:** (25 gauge) (16 gauge)

**Lengths:** 8' to 24'

# SLOTTED DEFLECTION TRACK



## Description:

Accommodates vertical movement in non-load-bearing walls due to deflection or seismic activity. Ensures lateral stability for multi-story buildings.

## Technical Specifications

**Web Sizes:** 2-1/2" 3-5/8" 6" 8"

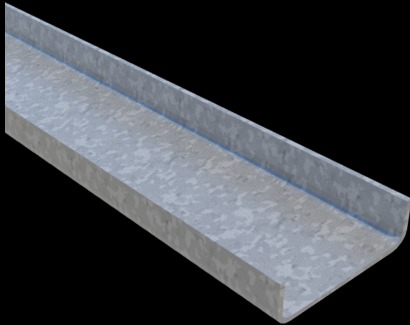
**Leg Heights:** 1-1/4" 1-1/2" 2"

**Material Thickness:** (20 gauge) to (14 gauge)

**Slot Lengths:** 3/4" to 1-1/2"



## BRIDGING CHANNELS



### Description:

Cold-rolled channels for lateral bracing in steel framing, maintaining stud alignment and reducing deflection. Made from high-strength galvanized steel, suitable for mid-wall bridging and u-track bracing.

### Technical Specifications

**Sizes (Depth x Lip):**  $\frac{3}{4}" \times 0.697"$  ( $\frac{1}{2}" + 0.197"$ )

$1" \times 0.697"$  ( $\frac{1}{2}" + 0.197"$ )

**Material Thickness:** (18 gauge) (16 gauge)

**Lengths:** Customizable

## DRYWALL CORNER BEAD



### Description:

Protects and defines drywall corners, creating sharp, professional lines. Easy to install, compatible with joint compounds, and ideal for residential and commercial interiors.

### Technical Specifications

**Profile Types:** 90° Standard Bullnose Wide Flange

**Wing Widths:**  $1" \times 1"$   $1\text{-}1/4" \times 1\text{-}1/4"$   $1\text{-}1/2" \times 1\text{-}1/2"$

**Materials:** Galvanized Steel Vinyl Aluminum

**Material Thickness:** 0.016" (steel)

**Lengths:** 8' 10' 12'

## FRAMING TRIMS



### Description:

Precision-formed trims for clean terminations and reinforcement in framing systems. Includes L Trim, J Trim, Z Trim, U Trim, and Shadow Line Trim.

### Technical Specifications

**Trim Types:** L J Z U Shadow Line

**Material Thickness:** (25 gauge) to (18 gauge)

**Lengths:** 8' 10'

# FURRING CHANNEL

(HAT CHANNEL)



## Description:

Hat-shaped channels for leveling walls, ceilings, and masonry surfaces. Provides rigidity and support for drywall or panel installation, enhancing insulation and sound control.

## Technical Specifications

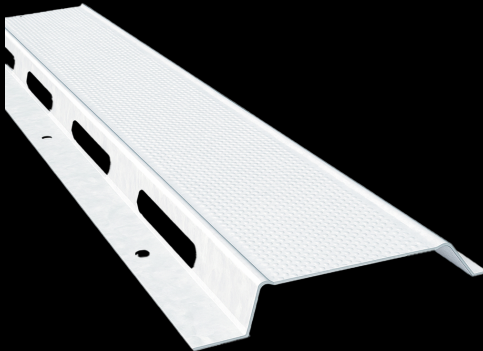
**Sizes (Web x Flange):**  $\frac{3}{4}$ "  $\times$  1-1/2" 1"  $\times$  1-1/2"

$\frac{1-1}{4}$ "  $\times$  1-1/2"  $\frac{1-1}{2}$ "  $\times$  1-1/2"

**Material Thickness:** (25 gauge) to (18 gauge)

**Lengths:** 8' 10' 12'

# RESILIENT CHANNEL



## Description:

Enhances sound isolation in walls and ceilings by decoupling drywall from framing. Ideal for noise-sensitive residential and commercial applications.

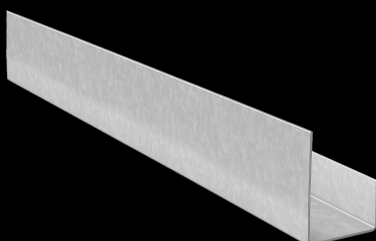
## Technical Specifications

**Dimensions:** 1/2" depth 2-1/2" width 5/8" flange

**Material Thickness:** (25 gauge) (22 gauge)

**Lengths:** 8' 10'

# J TRIM



## Description:

Edge trim for finishing drywall, paneling, and cladding systems. Provides a smooth, protective border, enhancing appearance and durability for interior and exterior use.

## Technical Specifications

**Sizes (Leg x Flange x Return):** 1/2"  $\times$  1"  $\times$  3/8"

$\frac{3}{4}$ "  $\times$  1"  $\times$  3/8"

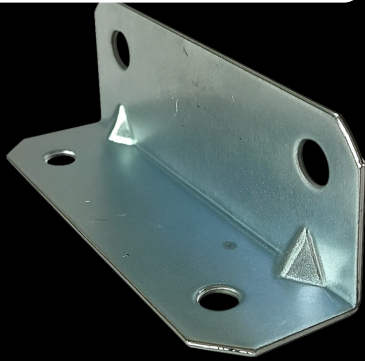
1"  $\times$  1-1/4"  $\times$  3/8"

**Material Thickness:** (25 gauge) to (20 gauge)

**Lengths:** 8' 10'



# BRIDGING CLIP



## Description:

Provides lateral support and alignment for cold-formed steel framing. Secures bridging channels to studs, reducing flex and rotation. Quick to install, cost-effective, and compatible with standard stud profiles.

## Technical Specifications

**Stud Sizes:** 1-5/16" 1-5/8" 2-1/2" 3-5/8" 6"

**Channel Compatibility:** 3/4" 1"

**Material Thickness:** (18 gauge) (16 gauge)

# SELF- TAPPING SCREWS



## Description:

High-strength, precision-engineered screws designed to cut their own threads into metal, wood, or plastic. Ideal for framing, cladding, and general construction, offering durability and corrosion resistance with premium-grade steel and multiple coating options.

## Technical Specifications

**Sizes:** 6 x 1/2" 8 x 3/4" 8 x 1" 10 x 1-1/2" 12 x 2"

**Head Styles:** Hex Washer, Pan, Flat, Wafer

# REBAR



## Description:

High-tensile rebar for reinforced concrete applications, ideal for foundations, slabs, walls, and columns. Ensures compliance with construction codes.

## Technical Specifications

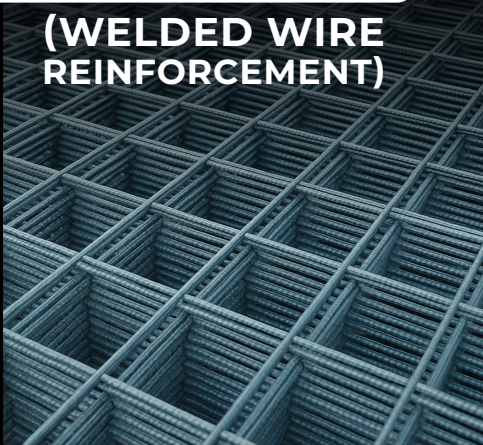
**Diameters:** 0.445" to 2.220"

**Lengths:** 20' 40'

**Material Grade:** 400W (Grade 60) 500W available

# REBAR MESH

(WELDED WIRE  
REINFORCEMENT)



## Description:

Pre-fabricated mesh for concrete reinforcement, providing uniform load distribution and faster construction. Suitable for slabs, walls, and structural elements.

## Technical Specifications

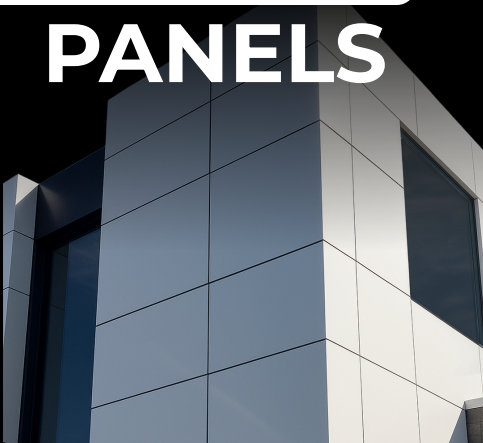
Sheet Sizes: 4' × 8' 5' × 10' 8' × 20'

Wire Diameters: 0.157" (#2) to 0.394" (#5)

Mesh Spacing: 3.937" × 3.937" 5.906" × 5.906"  
7.874" × 7.874"

Finish: Black Galvanized Epoxy-coated

# CLADDING PANELS



## Description:

Precision-engineered panels for architectural cladding, soffits, and enclosures. Made from aluminum composite or solid metal, offering lightweight strength and modern aesthetics.

## Technical Specifications

Materials: ACM, Aluminum, Galvanized Steel,  
Stainless Steel

Panel Thickness: 0.118" to 0.236" (ACM)  
0.031" to 0.118" (metal)

Bending: Single/multi-fold profiles CNC precision

Finish: PVDF Powder-coated Anodized

Sizes: 48" × 96" 59" × 118"

# CORRUGATED METAL SHEETS



## Description:

Durable sheets for roofing, siding, and cladding with a wave-like profile for rigidity and water shedding. Made from galvanized or pre-painted steel.

## Technical Specifications

Profiles: 1/2" 7/8"

Material Thickness: (26 gauge) to (22 gauge)

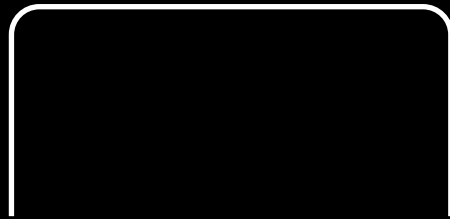
Widths: 30" coverage ~33" overall

Lengths: 6' to 24'

Finish: Galvanized Pre-painted Custom colors



# CONTACT US



At Noble Metal, every product we manufacture is fully customizable. Whether you need special sizes, unique profiles, custom coatings, or engineered solutions, we're ready to tailor our products to your exact project requirements. If you can imagine it - we can build it. Contact us today to request custom specifications, quotes, or technical support.



**Noblemetal.ca**



**info@noblemetal.ca**



**+1 6838820007**